



NOVEMBER 8TH- 10TH, 2024

Hilton Hotel

1750 Rockville Pike

Rockville, MD 20852



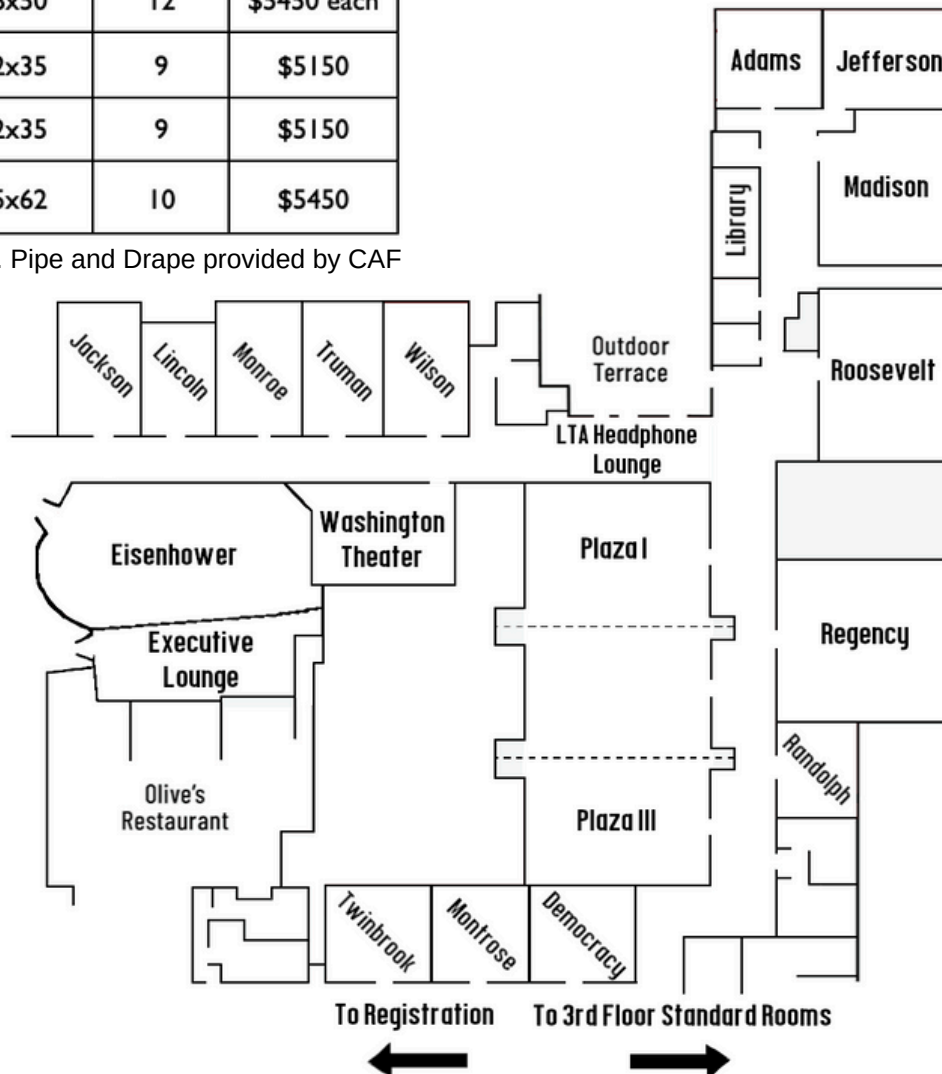
THIRD FLOOR MEETING ROOMS

Room	Length x Width	Height	Cost
Twinbrook	25x26	10	\$5250
Montrose	25x26	10	\$5250
Democracy	26x24	9	\$4850
Randolph	23x27	9	\$4850
Regency	42x27	9	\$5450
Jackson	22x36	9	\$5150
Library	Info available upon request		
Lincoln	21x31	9	\$5050
Monroe	22x35	9	\$5150
Plaza Ballrooms I & III	38x50	12	\$5450 each
Truman	22x35	9	\$5150
Wilson	22x35	9	\$5150
Roosevelt *	35x62	10	\$5450

*Air wall adjoins Madison. Pipe and Drape provided by CAF

Room	Length x Width	Height	Cost
Jefferson	27x36	9	\$5150
Adams	26x30	9	\$5050
Eisenhower	38x60	10	\$5550
Madison **	35x40	9	\$4950
Executive Lounge	Wedge shaped. 46' long		\$5450
LTA Lounge	Info available upon request		\$2500
Hallway Tables Outside Plaza	Info available upon request		\$800 each

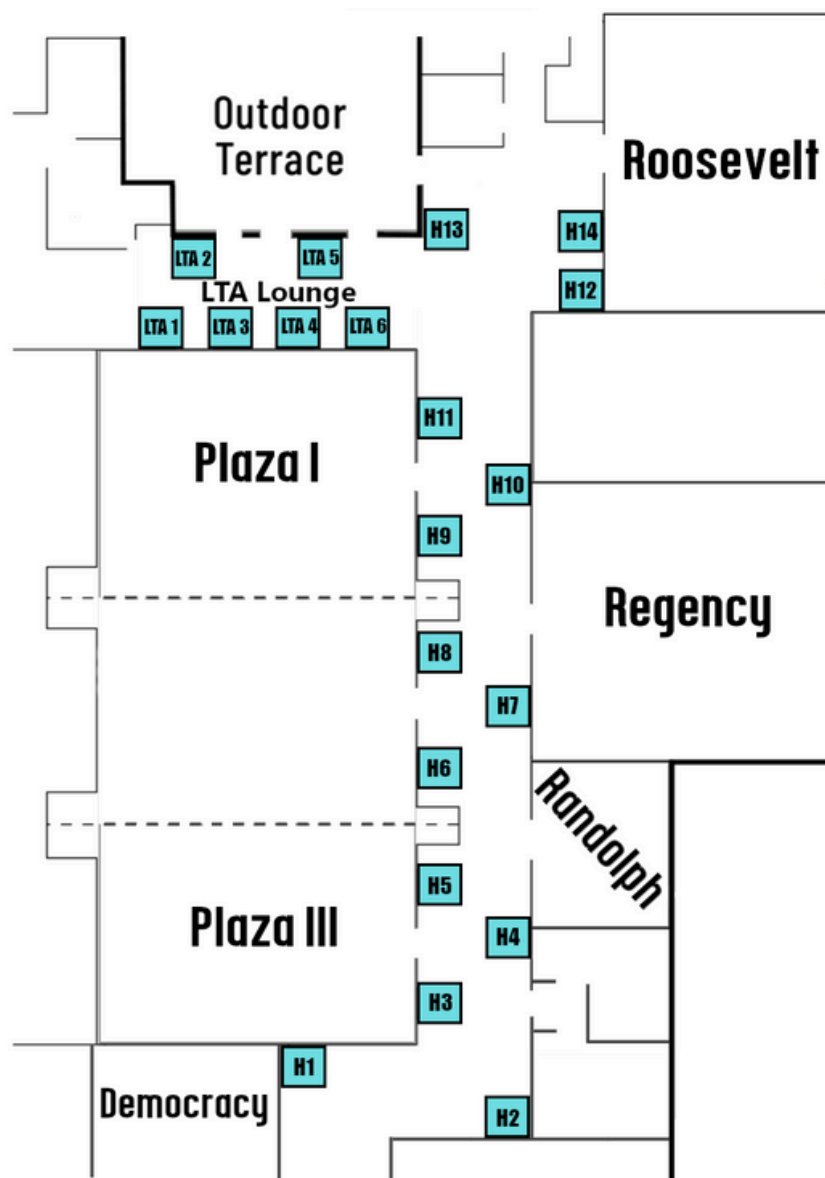
**Air wall adjoins Roosevelt. CAF will provide insulation, freight boxes and pipe and drape.





LTA LOUNGE & HALLWAY

Room	Length x Width x Height	Cost
LTA Lounge	Info available upon request	\$2500
Hallway Tables Outside Plaza (H1- H13)	Info available upon request	\$800 each

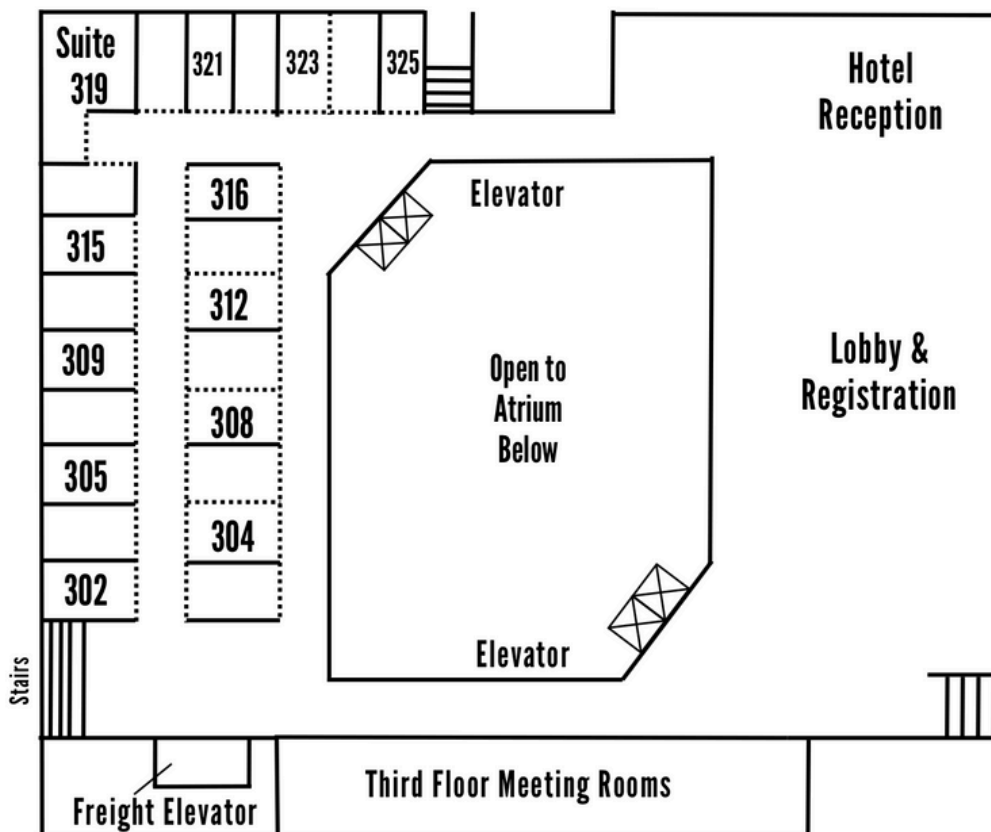


To 3rd Floor Standard Rooms →



THIRD FLOOR ROOMS

Room	Length x Width	Area	Cost
302	13x20	260	\$3950
304	13x20	260	\$3950
304	13x20	260	\$3950
304	13x20	260	\$3950
309	13x20	260	\$3950
312	13x20	260	\$3950
315	13x20	260	\$3950
316	13x20	260	\$3950
Suite 319	15x14 20x10	210 220	\$4150
321	13x20	260	\$3950
323	13x20	260	\$3950
325	13x20	260	\$3950

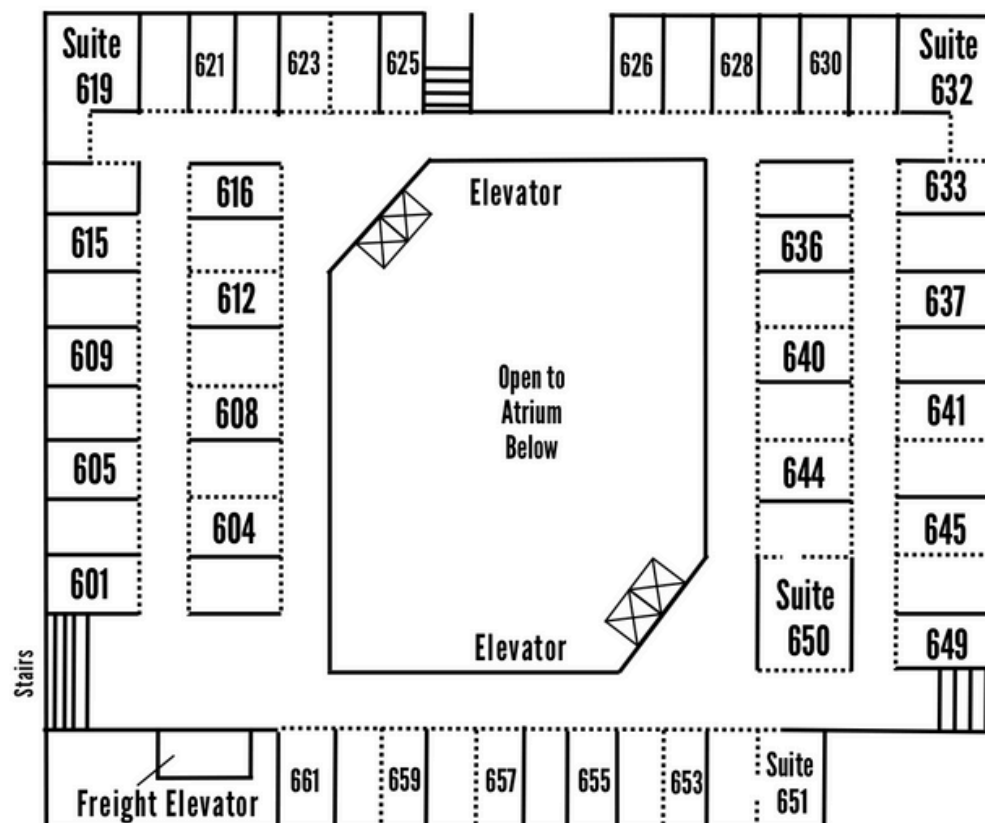




SIXTH FLOOR ROOMS

Room	Length x Width	Area	Cost
601	13x20	240	\$3850
604	13x20	260	\$3850
605	13x20	240	\$3850
608	13x20	260	\$3850
609	13x20	240	\$3850
612	13x20	260	\$3850
615	13x20	260	\$3850
616	13x20	260	\$3850
Suite 619	15x14 20x10	210 200	\$4050
621	13x20	240	\$3850
623	13x20	240	\$3850
625	13x20	240	\$3850
626	13x20	240	\$3850
628	13x20	240	\$3850
630	13x20	260	\$3850
Suite 632	15x14 20x10	224 200	\$4050

Room	Length x Width	Area	Cost
633	13x20	260	\$3850
636	13x18	218	\$3850
637	13x18	218	\$3850
640	13x20	260	\$3850
641	13x18	216	\$3850
645	13x18	216	\$3850
649	13x18	216	\$3850
Suite 650	15x14 20x10	210 200	\$4050
Suite 651	20x12 17x11	240 187	\$4050
653	13x20	240	\$3850
655	13x20	240	\$3850
657	13x20	240	\$3850
659	13x20	240	\$3850
661	13x20	260	\$3850

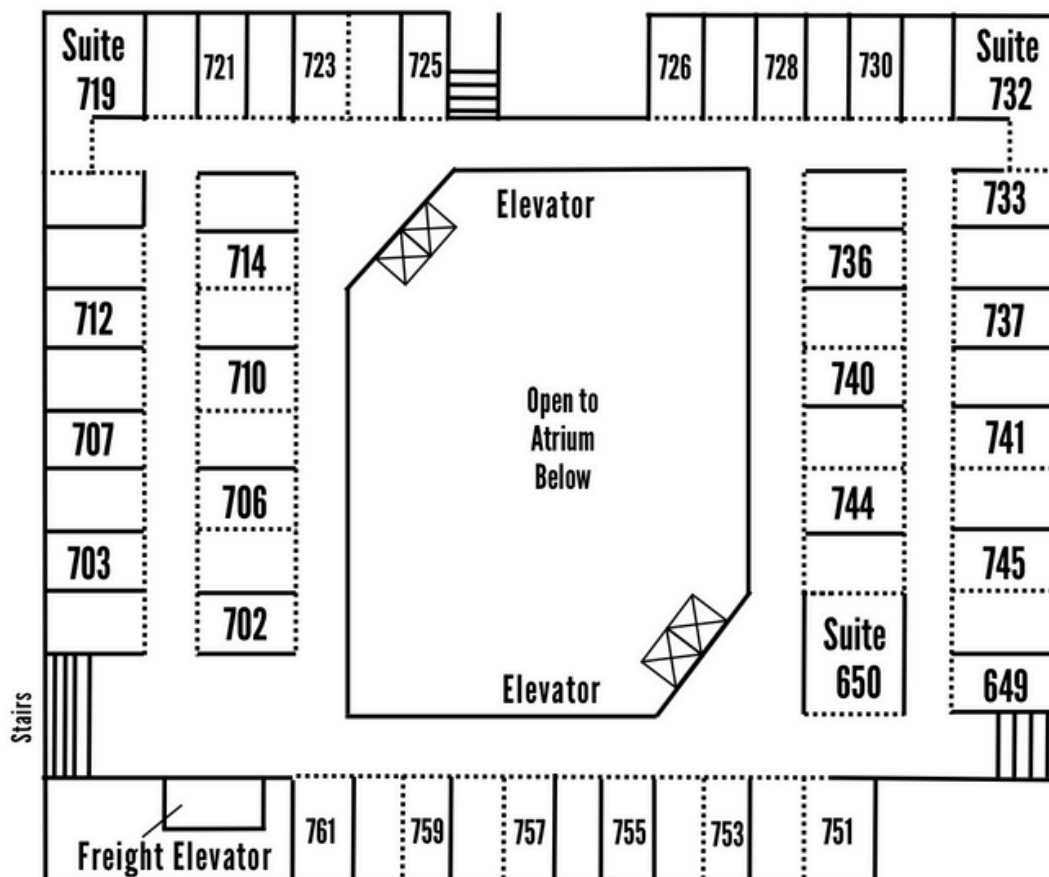




SEVENTH FLOOR ROOMS

Room	Length x Width	Area	Cost
702	13x20	240	\$3850
703	13x20	260	\$3850
706	13x20	240	\$3850
707	13x20	260	\$3850
710	13x20	240	\$3850
712	13x20	260	\$3850
714	13x20	260	\$3850
Suite 719	15x14 20x10	210 200	\$4550
721	13x20	240	\$3850
723	13x20	240	\$3850
725	13x20	240	\$3850
726	13x20	240	\$3850
728	13x20	240	\$3850
730	13x20	260	\$3850

Room	Length x Width	Area	Cost
733	13x20	260	\$3850
736	13x18	218	\$3850
737	13x18	218	\$3850
740	13x20	260	\$3850
741	13x18	216	\$3850
744	13x20	260	\$3850
745	13x18	216	\$3850
749	13x18	216	\$3850
Suite 750	15x14 20x10	210 200	\$4150
Suite 751	20x12 17x11	240 187	\$4050
753	13x20	240	\$3850
755	13x20	240	\$3850
757	13x20	240	\$3850
759	13x20	240	\$3850

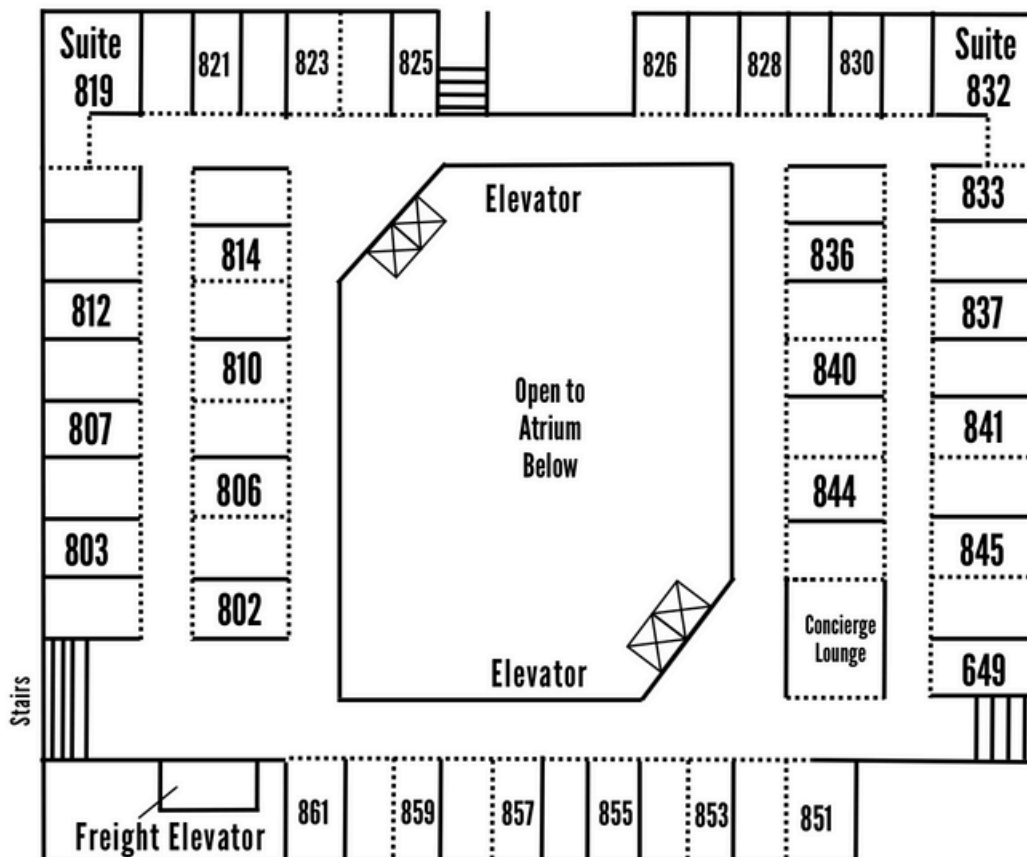




EIGHTH FLOOR ROOMS

Room	Length x Width	Area	Cost
802	13x20	240	\$3850
803	13x20	260	\$3850
805	13x20	240	\$3850
807	13x20	260	\$3850
810	13x20	240	\$3850
812	13x20	260	\$3850
814	13x20	260	\$3850
Suite 819	15x14 20x10	210 200	\$4550
821	13x20	240	\$3850
823	13x20	240	\$3850
825	13x20	240	\$3850
826	13x20	240	\$3850
828	13x20	240	\$3850
830	13x20	260	\$3850
Suite 832	15x14 20x10	224 200	\$4050

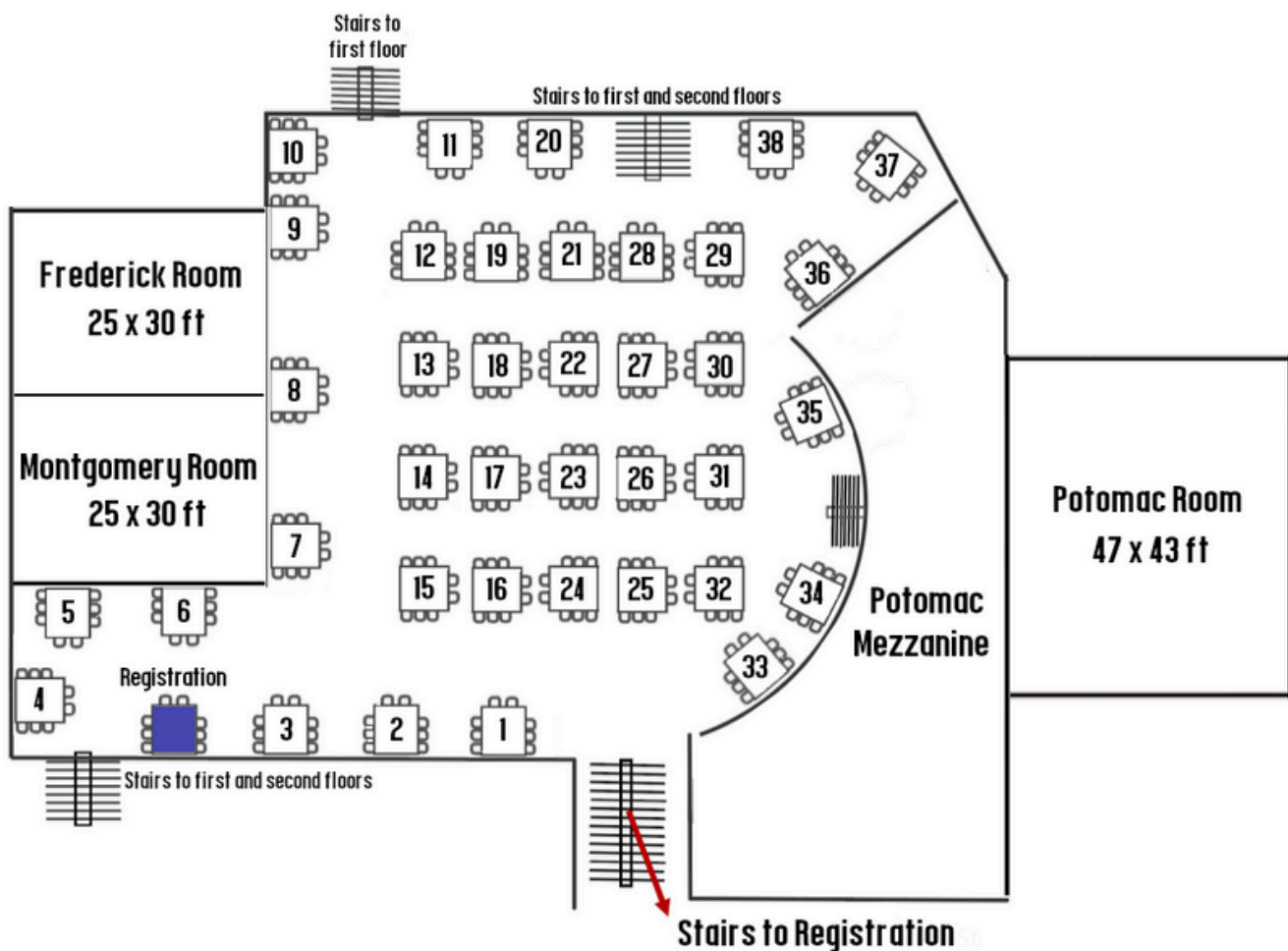
Room	Length x Width	Area	Cost
833	13x20	260	\$3850
836	13x18	218	\$3850
837	13x18	218	\$3850
840	13x20	260	\$3850
841	13x18	216	\$3850
844	13x20	260	\$3850
845	13x18	216	\$3850
849	13x18	216	\$3850
Concierge Lounge	20x21	410	\$4550
Suite 851	20x12 17x11	240 187	\$4450
853	13x20	240	\$3850
855	13x20	240	\$3850
857	13x20	240	\$3850
859	13x20	240	\$3850
861	13x20	240	\$3850





ATRIUM MEETING ROOMS

Room	Length x Width	Height	Cost
Frederick	25x32	10	\$5375
Montgomery	26x44	10	\$5475
Potomac	47x43	10	\$6575
Atrium Marketplace/ Hallway Booth	10x10	N/A	\$800 each





LOBBY -STATIC DISPLAY ZONE

NEW this year!

Display your equipment in the hotel lobby next to the registration table

Each space is 8'x8', \$500 each

All spaces will be enclosed with stanchions provided by CAF

All spaces will not have power and will not make sound as it is an area to display equipment and/or signs

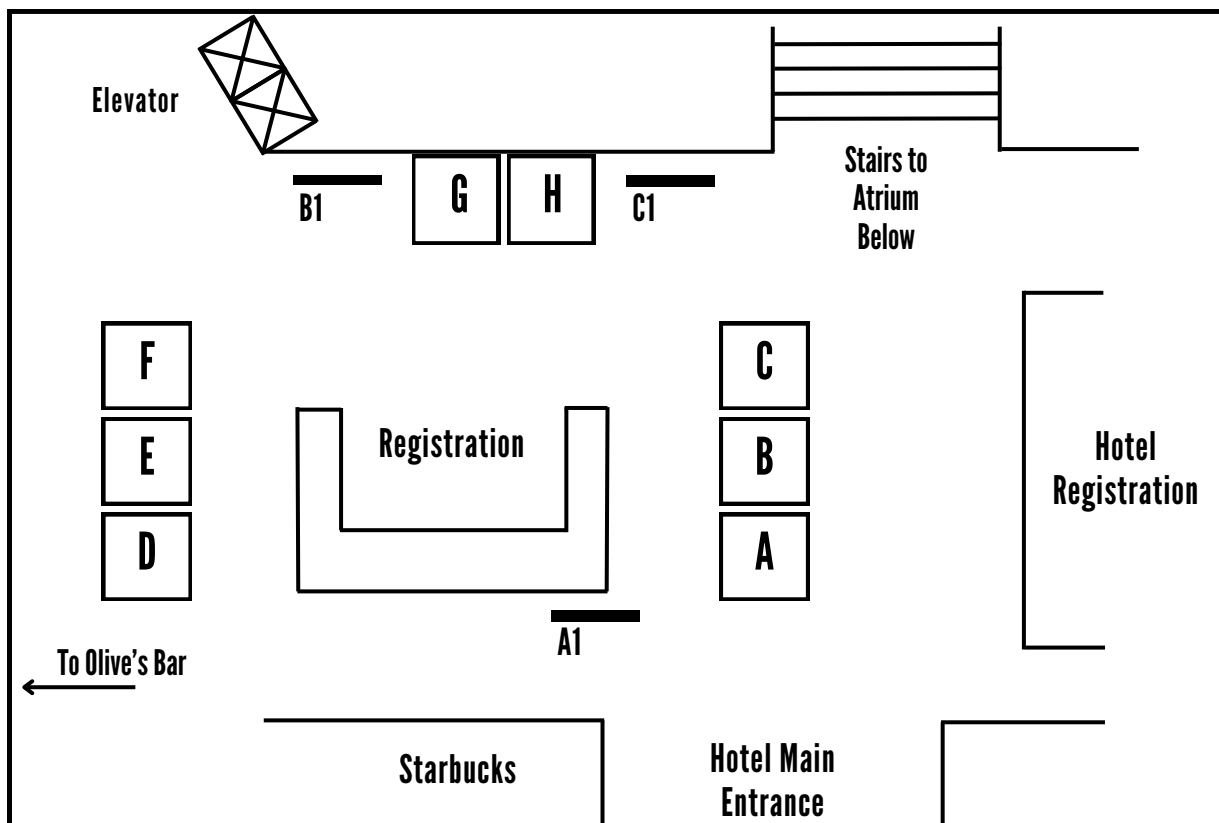
All spaces will have access to set up starting at 12:00 noon Thursday

Vendors at spaces A-F can have signage but will not obstruct others and will not exceed 2' in width and 4' in height

Spaces G and H can have signs up to but not exceeding 4' in width and 8' in height

Freestanding sign locations as marked (A1-C1) and maximum sizes listed below

Sign #	Maximum Size	Cost
A1	2x8	\$200
B1	4x8	\$200
C1	4x8	\$200





CAPITAL AUDIOFEST 2024

Is there a more focused media in the marketplace for reaching our audience?

Very doubtful!

Reserve space today in our Official Show Guide!

If you have any special events or gear in your room, are promoting any contests and giveaways and want to let Show-goers know about your room(s), the Capital Audiofest Show Guide is the best way to reach CAF enthusiasts and attendees.

4,000 copies were distributed to visitors and industry attendees at the 2023 show free of charge. Our show guide was also posted online and was accessible by QR code.

Advertisement Rates:

Branded Front Cover	\$1350
Inside Front Cover	\$950
Back Cover	\$1150
Inside Back	\$850
Full Page	\$350
Half Page	\$250
Centerfold or Double Page (throughout guide)	\$800

Full Page

Size 5.5" x 8.25"
Bleed 0.125"

Half Page

Size 5.5" x 4.125"
Bleed 0.125"

FILES

- Please send all files as PDFs with High Quality print settings with all images 300dpi
- Artwork may be submitted to Gary Gill at capitalaudiofest@gmail.com
- For larger files please consider sending via Dropbox

The final deadline for all artwork, as well as Events, Seminars, and Exhibitors' Brands and Information, is no later than SEPTEMBER 16th, 2024

For further information, contact Gary Gill at capitalaudiofest@gmail.com